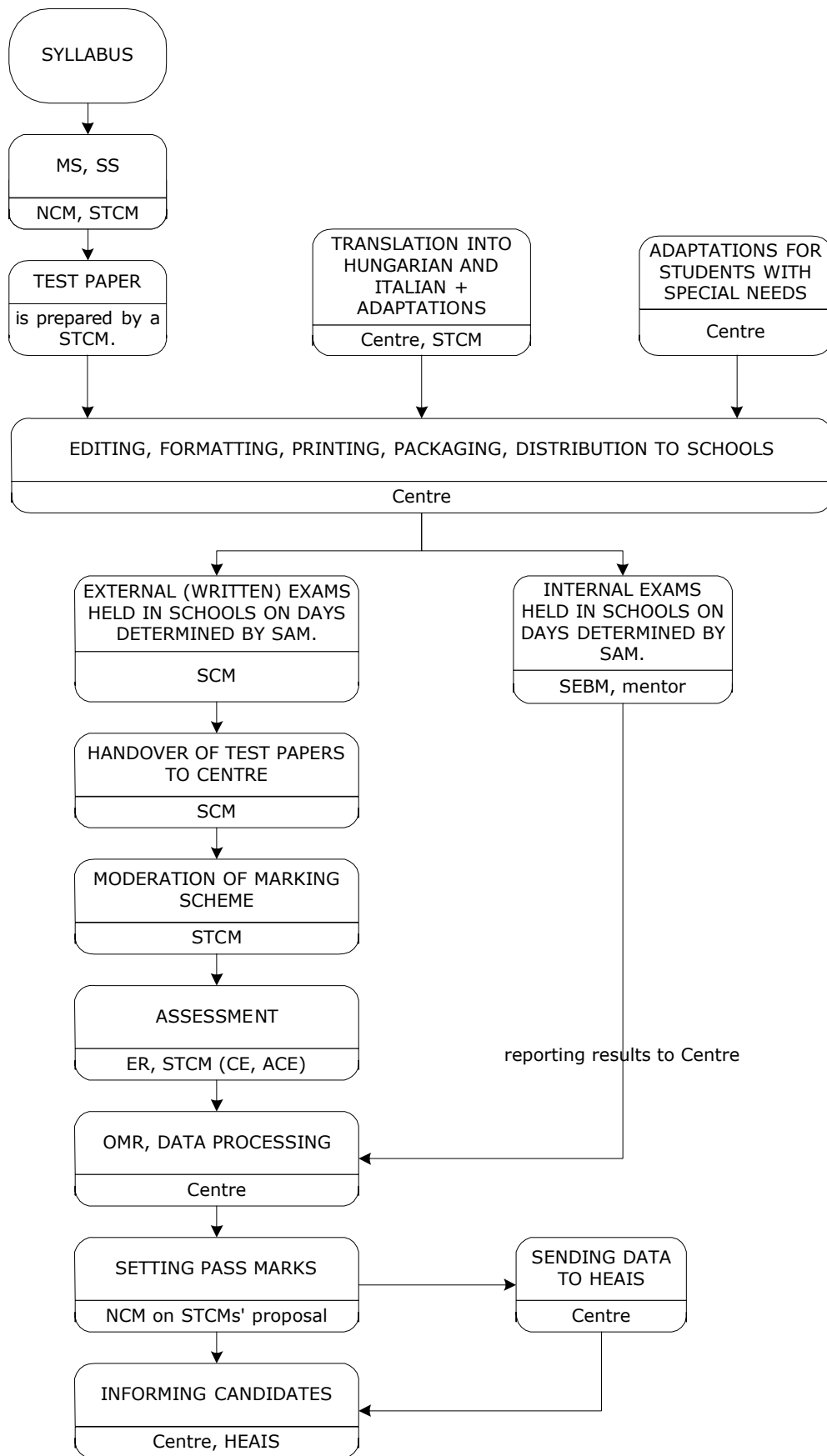


THE OUTLINE OF PROCEDURES FROM THE PREPARATION OF THE SYLLABUS TO THE RESULTS OF THE MATURA



Abbreviations:

ACE = assistant to chief examiner
 CE = chief examiner
 ER = external rater
 HEAIS = Higher Education Application-Information Service
 MS = Matura Syllabus

NCM = National Committee for the Matura
 SAM = Schedule of Activities for the Matura
 SEBM = School Examination Boards for the Matura
 SS = subject syllabus
 STCM = Subject Testing Committees for the Matura